

# UPHOLSTERY AND LAMINATE COLORS

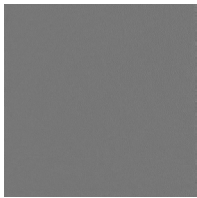


## PRO-FORM™ VINYL

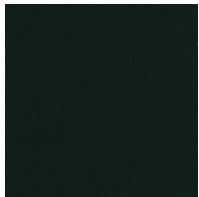
Durable, cleanable and meant to last. Standard on all stools and PROTEAM



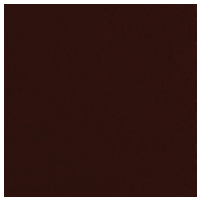
V19-Navy Blue



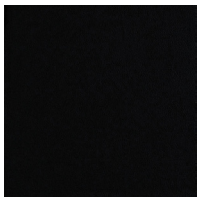
V20-Dove Gray



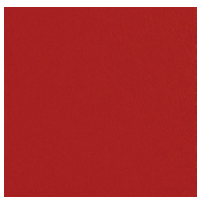
V21-Forest Green



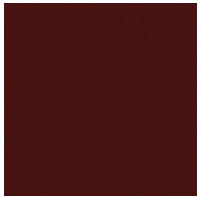
V22-Deep Wine



V23-Black



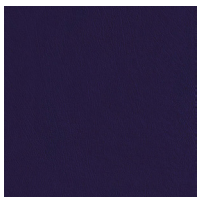
V24-American Beauty



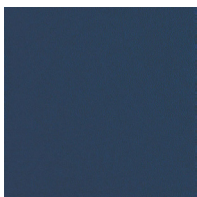
V25-Claret



V26-Royal Blue



V27-Purple



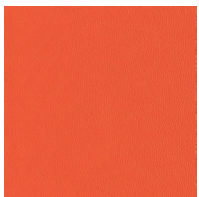
V28-Regimental Blue



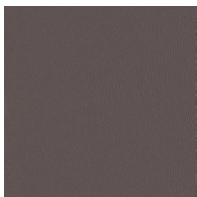
V29-Bright Blue



V30-Brown



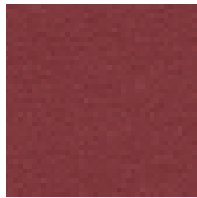
V31-Orange



V32-Pencil Gray

## COMFORT PLUS™ VINYL

Designed for a softer feel. Standard on exam tables and treatment tables.



V11-Burgundy



V12-Oak Brown



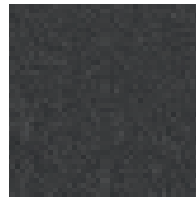
V13-Rodeo Tan



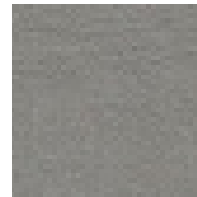
V14-Nordic Blue



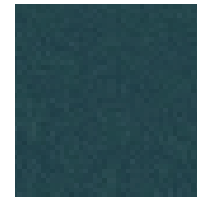
V15-Slate Blue



V16-Black



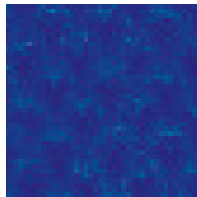
V17-Gray



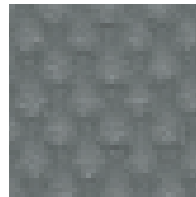
V18-Grotto Green

## MATS VINYL

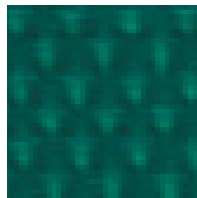
Nylon-reinforced vinyl, made to withstand heavy use environments.



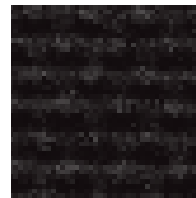
V35-Blue



V36-Gray



V37-Green



V38-Black

## URETHANE UPHOLSTERY

Environmentally friendly urethane is PVC free. Standard on our Econo-Line™ products.



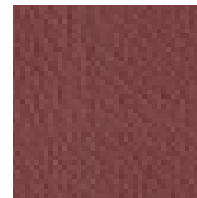
V40-Indigo Blue



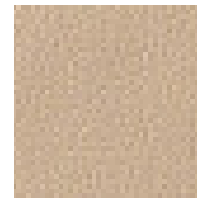
V41-Flint Gray



V42-Mushroom



V43-Port



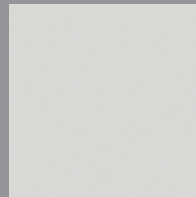
V44-Beige

## LAMINATE FINISHES

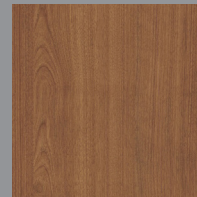
Scratch and dent resistant. Easy to clean and disinfect.



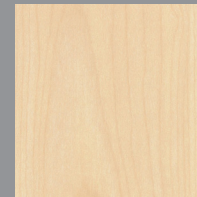
L01-Natural Oak



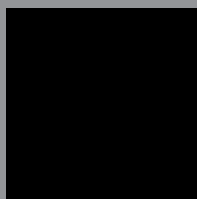
L02-Folkstone Gray



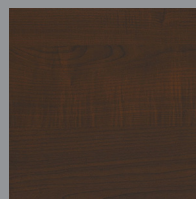
L03-Wild Cherry



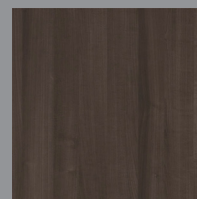
L04-Maple



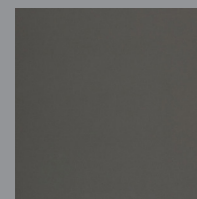
L05-Black



L06-Modern Walnut



L07-Weathered Gray



L08-Slate Gray